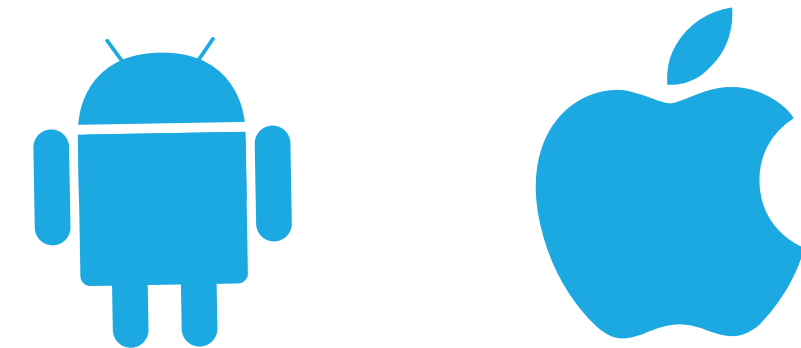




Real-time device access for your distributed DevOps and QA teams



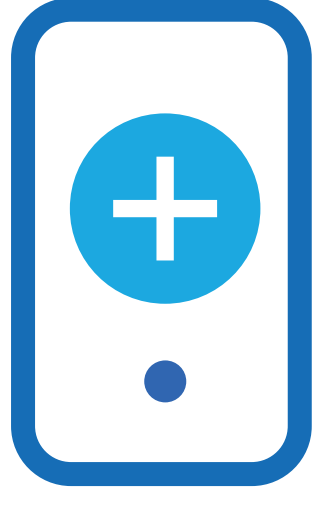
Supported Platforms



If you have geographically distributed DevOps and QA teams, purchasing and shipping devices for each location becomes tedious and expensive. Going with a public device farm means shelling out extra money on device rentals and unavailability of devices you need.

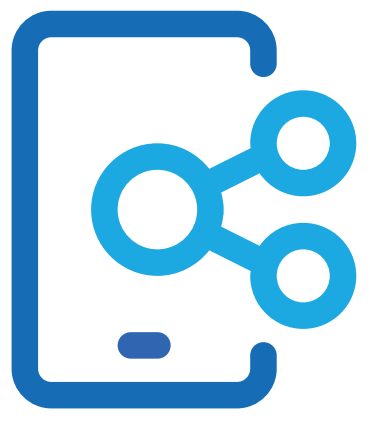
AstroFarm is a secure and cost-effective private mobile device farm solution that empowers your distributed QA and DevOps teams with real devices they can access from anywhere, anytime, while maximizing ROI and minimizing e-waste. With AstroFarm, you get an uninterrupted testing experience—claim a device, use it for as long as needed, and then release it for your teammates to use. It's that simple.

Key Features



Fast Device Enrollment

Connect multiple devices from an office device rack or from a contributor machine to a hub in minutes.



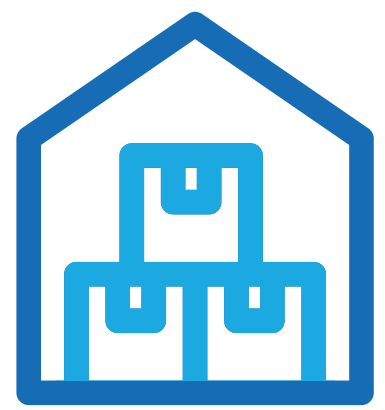
Connect and Share from Anywhere

Allow your distributed teams to remotely connect their Android, iOS/iPadOS, Rugged, or Wearable devices to the private device farm.



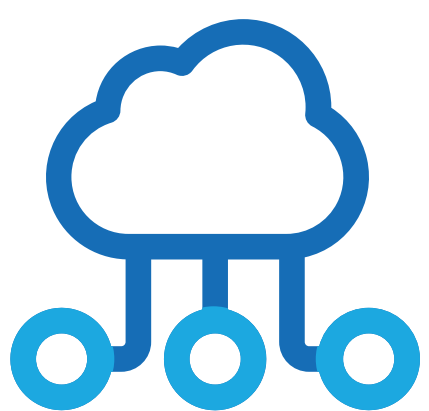
Remote View and Control

Easily claim a device to remotely view, control the device screen, and use it for development or testing use cases.



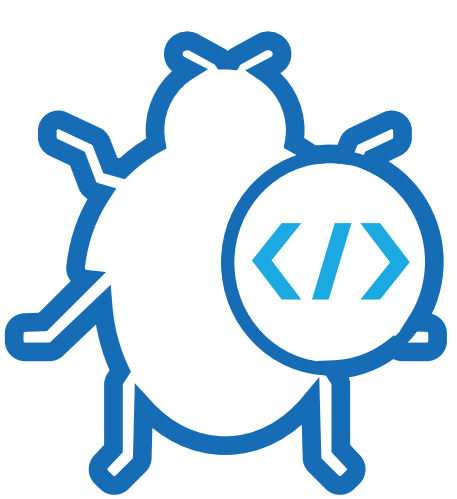
Instant Inventory Review

Keep track of all your devices and get usage insights from AstroFarm's console.



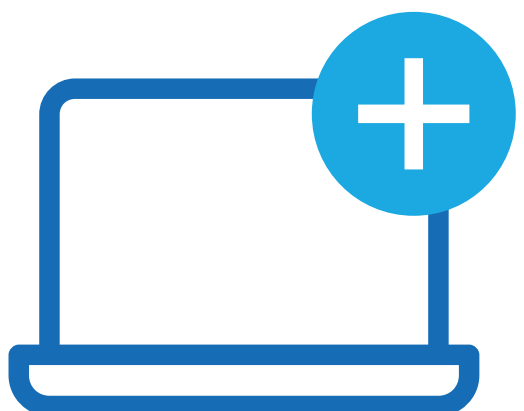
Cloud Hosting and Support

Capitalize on secure and dedicated cloud hosting for your device farm.



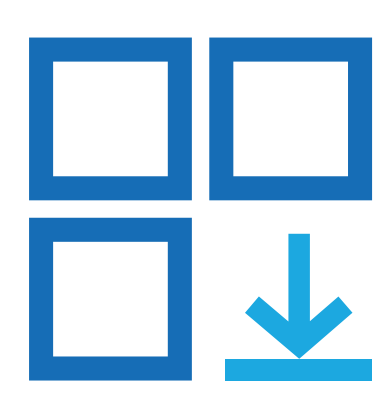
Automation Testing and Remote Source Code Debugging

WebDriverAgent (WDA), iOS Development Bridge (IDB), and Android Debug Bridge (ADB) interfaces allow for remote code debugging and automation testing.



CI/CD Pipeline Support

Dynamically procure devices, establish a connection, and begin running a test suite if a pipeline has already been defined in GitHub, GitLab, or Jenkins.



Install Apps Remotely

Install iOS App Store package (IPA) and Android Application Package (APK) files on connected Android and iOS/iPadOS devices.



Performance Monitoring

Monitor CPU and Memory utilization, including each device's processes in real-time during testing sessions. View device performance history and make informed decisions.



Multi-device view with Remote Screen Pop-out

View all device screens and test multi-screen behavior at once without having to constantly switch between devices.



Device Logs to Analyze Device Health

Retrieve the logs of connected devices from the console for troubleshooting and analytics.

Why AstroFarm?



Multi-model Support:

Choose from on-premise and SaaS models.



Maximize ROI:

Increase ROI on your device by 60+% using AstroFarm's cloud hosting that helps share existing devices with your distributed teams.



Boost Employee Productivity:

Ensure that devices are available to distributed teams and that tests are conducted on devices with no time constraints.



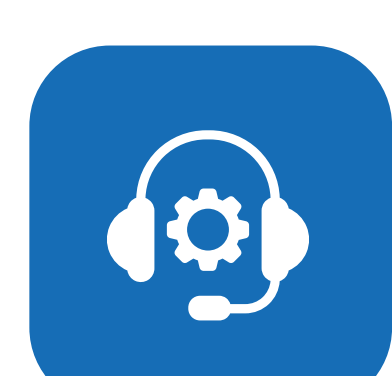
Define Admin and User Roles:

Define access privileges with Contributor Management. Third-party IDP or built-in controls ensure better user management.



Ensure Data Security:

AstroFarm's private cloud model ensures device safety and security.



Real-time Support:

24/7 real-time technical support via call/chat/email/ticket.

AstroFarm is specially curated for DevOps & QA teams, ISVs & OEMs and IT Support Teams.



App Development and Testing teams

- ▶ Plug and play with Agentless device enrollment.
- ▶ Code Development, Debugging, Manual & Automation testing on real devices.
- ▶ Reduce e-waste through better device utilization across the organization.



ISVs and OEMs

- ▶ Save on device shipment costs and time.
- ▶ Provide quick and easy access to new devices to remote teams in all corners of the world.
- ▶ Build a device farm at the device production site as a device rack.



Support Teams

- ▶ Support teams can ask customers to enroll devices in AstroFarm for device-specific issues.
- ▶ Troubleshoot issues with Remote Debugging.
- ▶ Save on potential device shipment or travel to customer sites.

Integrations we support



Jenkins



GitLab



Ranorex®



appium

cucumber



TestComplete

android
studio



Xcode



Selenium

About 42Gears

42Gears is a leader in enterprise mobility management, offering cutting-edge solutions that aim to transform the digital workplace. Delivered from the cloud and on-premise, 42Gears products support all major mobile and desktop operating systems, enabling IT and DevOps teams to improve frontline workforce productivity and the efficiency of software development teams. 42Gears products are used by over 18,000 customers across various industries in more than 115 countries and are available for purchase through a global partner network.

Get in touch and start your 21-day free trial today!

Contact Us



sales@42gears.com



Americas HQ



+1-424-284-2574



Europe/Africa HQ



+44-161-394-0338



APAC/ME HQ



+91-80-61957000



/company/42gears



/42gears



@42gears



/42gears



www.42gears.com