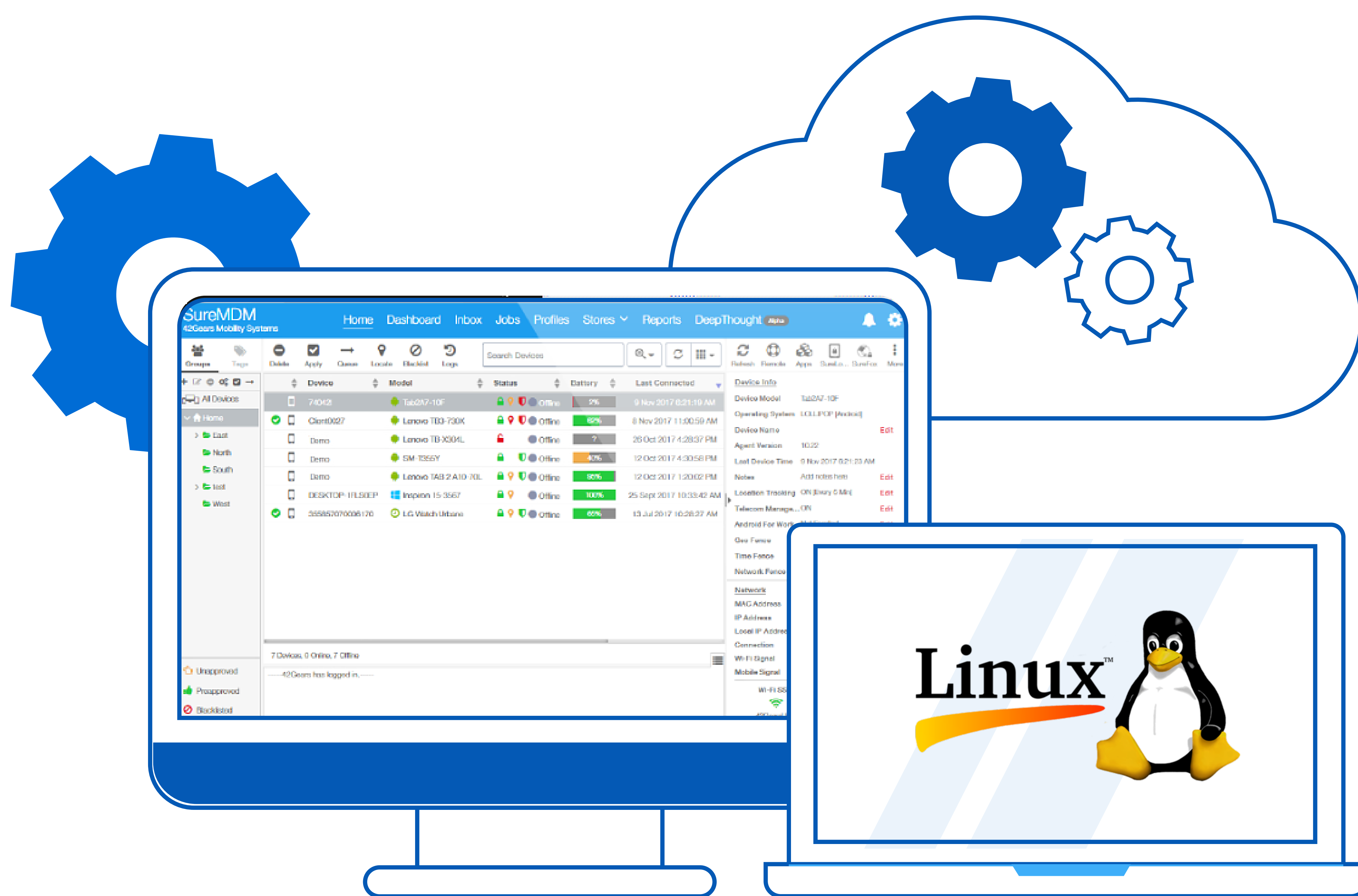


SureMDM® For Linux

Secure. Monitor. Manage.



Challenge of Managing Linux Devices

As an open-source OS, Linux has the ability to power devices such as computers, embedded devices, POS machines, mobile devices, etc. However, troubleshooting Linux devices and keeping them updated can be difficult due to the open-ended nature of the platform. It is especially true in an enterprise environment where having granular control over the complete device landscape can be very challenging.

About SureMDM

SureMDM by 42Gears is an intuitive and powerful Unified Endpoint Management (UEM) solution for Linux, Android, iOS/iPadOS, Windows, macOS, Chrome OS, Apple TV, Wear OS, VR, and IoT platforms. Deploy, manage, and secure mobile devices and the content they hold, keep corporate data safe, and remotely monitor and repair any device from an easy-to-use central console.

Versions Supported



SureMDM's Linux Capabilities



Linux Kiosk Mode:

Turn your Linux device into a dedicated Kiosk by allowing specific applications. Access to the rest of the system and other unallowed apps is completely blocked.



OS Update:

Use Linux MDM solution to install Kernel and OS updates remotely. OS patches can be pushed to all Linux devices at once, ensuring they all receive the latest security updates with minimal user intervention.



Remote Support:

You can remotely view the Linux desktop screen from your browser from a Windows computer, from another Linux machine, or even from a mobile device such as Android or iPhone. You can interact with the remote Linux device using your computer mouse and keyboard.



Remote Linux Shell Scripting:

You can execute Linux shell commands to perform any operation on a remote Linux computer or device, similar to how you would do if it was right in front of you.



Compliance Job Support:

Creating compliance rules based on different conditions (OS versions, Anti-virus, Firewall, etc.) and taking actions when there is a compliance failure.



App Analytics Report:

This allows the users to fetch details such as application name, application start time, application end time, and duration for all enrolled Linux devices in SureMDM. Admins can also view app analytics reports in the dashboard panel of the SureMDM console.

SureMDM's Key Functionalities



Efficient Device Management

Remotely manage and secure your device fleet by:

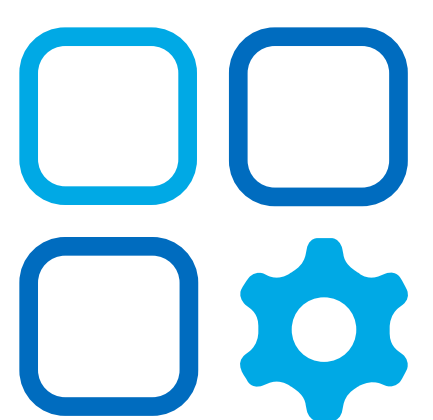
- ▶ Creating role-based user permissions and restrictions
- ▶ Troubleshooting and rebooting devices remotely
- ▶ Remotely executing custom script commands
- ▶ Blocking unauthorized URL and app access



Centralized Management Console

Control all your enterprise devices centrally by:

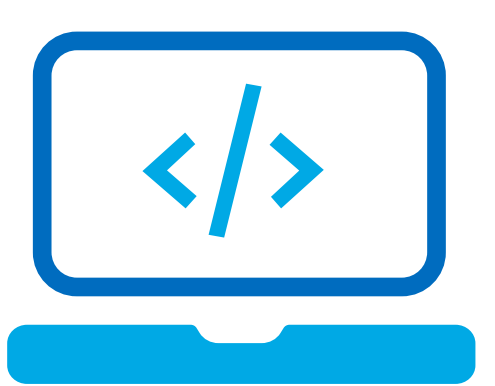
- ▶ Managing all devices from a single web console
- ▶ Grouping or tagging devices for easy classification and filtering
- ▶ Broadcasting messages from the central console to any device
- ▶ Generating custom reports on demand and in a scheduled manner
- ▶ Branding the console with company logo and customized title bar



Application Management

Deploy, manage, and secure apps on devices by:

- ▶ Remotely pushing and updating applications on devices
- ▶ Silently installing and uninstalling apps
- ▶ Managing content using remote file transfer functionality
- ▶ Deploying multiple jobs together with a single composite job



Developer Support

Integrate SureMDM's functionality in your own applications using:

- ▶ REST APIs
- ▶ Plugin development framework

Why choose SureMDM?

- ▶ A strong partner ecosystem with more than 130 partners across the globe.
- ▶ **Technical Superiority:** With over 13 years in the UEM industry, we have seamlessly supported more than 5 million device deployments across 115+ countries.
- ▶ **Agility and Scalability:** SureMDM ensures unlimited scalability and business agility. We offer a common agent for SaaS and On-premise.
- ▶ **Real-time Support:** You get real-time 24/7 technical support via call/chat/email/ticket.
- ▶ **Product Customization:** Quick turnaround on feature and customization requests.
- ▶ **Value for Money:** Realize a 25X return on investment and 60% less time managing your device ecosystem with SureMDM.

About 42Gears

42Gears is a leader in enterprise mobility management, offering cutting-edge solutions that aim to transform the digital workplace. Delivered from the cloud and on-premise, 42Gears products support all major mobile and desktop operating systems, enabling IT and DevOps teams to improve frontline workforce productivity and the efficiency of software development teams. 42Gears products are used by over 18,000 customers across various industries in more than 115 countries and are available for purchase through a global partner network.


Start your 30-day free trial today!

Contact Us

 sales@42gears.com




Americas HQ

 +1-424-284-2574




Europe/Africa HQ

 +44-161-394-0338



APAC/ME HQ

 +91-80-61957000



<< [Scan the QR code for ROI Calculator](#)

[Scan the QR code to try SureMDM for free](#) >>



 [/company/42gears](#)

 [/42gears](#)

 [@42gears](#)

 [/42gears](#)