

Realize Higher ROI on Zebra Enterprise Devices

SureMDM provides comprehensive device management and security features to help businesses remotely manage, monitor, secure, and troubleshoot Zebra enterprise devices in real-time.



SUREMDM SECURES AND MANAGES ZEBRA ENTERPRISE DEVICES WITH FEATURES SUCH AS:

ENGAGE

Setup:

Using StageNow and OEMConfig, quickly and easily set up devices with Zebra-specific configurations.

Provision:

Consistently provision profiles and applications on every device.

CONTROL

Manage:

Install, configure, update, or remove applications and content remotely. Manage connected peripherals or things from the same SureMDM console as Zebra devices.

Support:

Control Zebra device screen by simulating key and touch events to operate Zebra devices remotely. Also manage things (peripherals) such as a printer, smart battery, and scanner connected to Zebra devices.

Support:

Control Zebra device screen by simulating key and touch events to operate Zebra devices remotely. Also manage things (peripherals) such as a printer, smart battery, and scanner connected to Zebra devices.

Monitor:

Locate, trace and secure lost or misplaced devices at any time.

View:

Generate comprehensive reports with advanced analytics that are easy-to-view for actionable insights.



Key Gestures:

Protect against unintended actions from camera, fingerprints, etc., while the keypad is locked.

Firmware:

With Zebra Lifeguard OTA (ZLGOTA), check and install firmware upgrades over-the-air without disturbing users.

Browser:

Safeguard against cyberthreats and customize features and security settings on the browser.

Network:

Configure device connectivity (3G/4G, Wi-Fi, and VPN) such that devices can connect to secure networks only. Integrate with CISCO ISE, Aruba Clearpass, and Webhooks to ensure network security.

Endpoint:

Protect Zebra devices from threats at three levels - network, app, and device with Mobile Threat Defense (MTD).

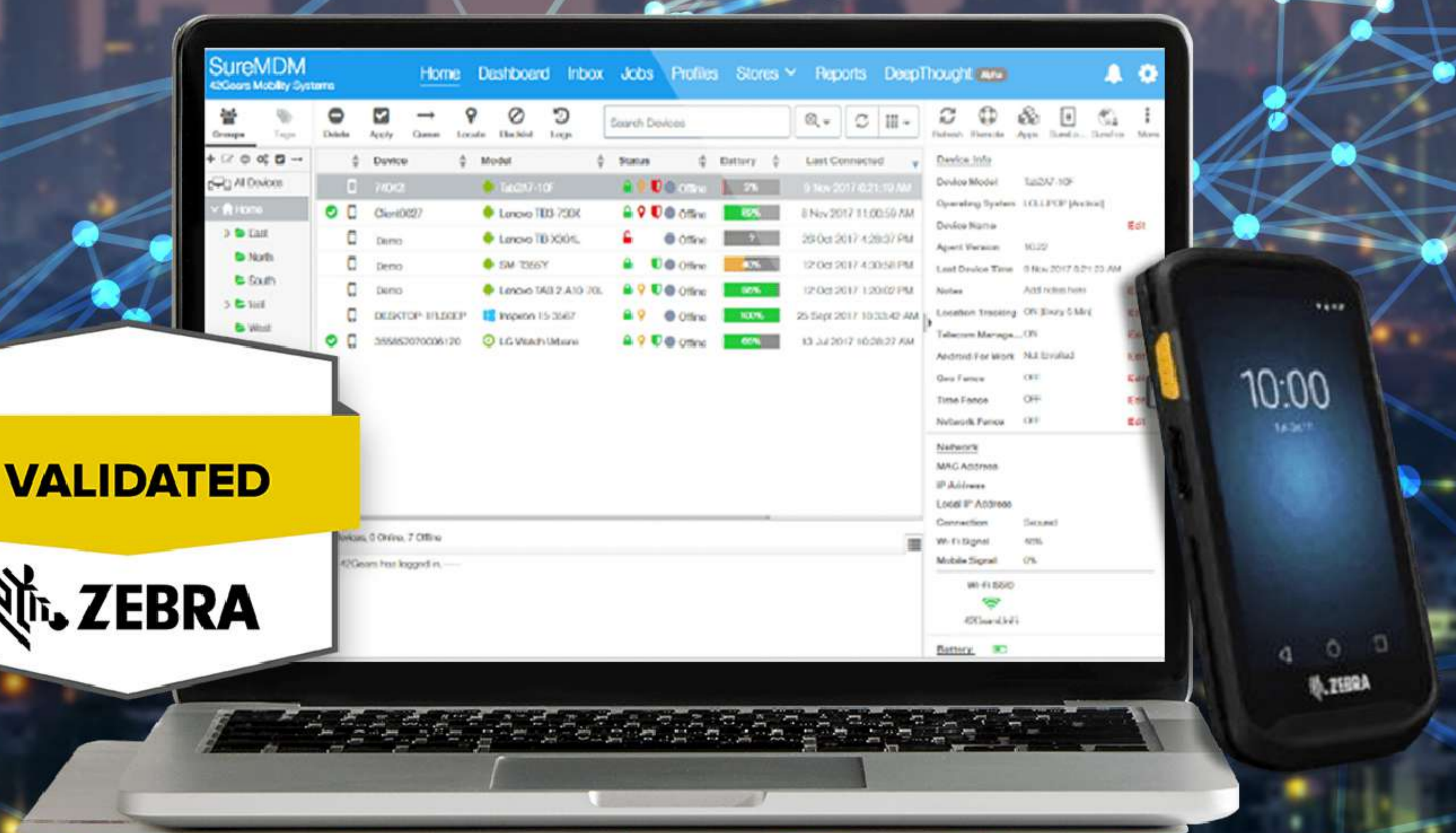
 **ADVANTAGES OF USING SUREMDM**

- ➔ Manage devices better with Zebra-specific configurations
- ➔ Remotely update applications and firmware (including Zebra LifeGuard updates) over-the-air. Rapidly provision Zebra devices in bulk with SureMDM support for Zebra StageNow.
- ➔ Leverage the extended support for peripherals, such as smart batteries, printers, and scanners, connected to Zebra devices.
- ➔ Avert threats and secure Zebra devices from various kinds of attacks with mobile threat defense.
- ➔ Integrate seamlessly with existing infrastructure Restrict access to only pre-approved business applications for users.



Why SureMDM

SureMDM has successfully completed the Zebra Technologies Enterprise Validation Program for Zebra's TC51 and TC52 touch computers. It is the first device management solution approved by Zebra to offer support for LifeGuard OTA 2.0.



VALIDATED
ZEBRA

Recognition

Gartner

Gartner Magic Quadrant for UEM Tools three years in a row



Gartner Peer Insights Customers' Choice for UEM Tools three times in a row



Recognized by Forrester Research and IDC MarketScape



42Gears SureMDM Bagged the Second Prize in the Digital India AtmaNirbhar Bharat Innovation challenge 2020 by Government of India

About 42Gears

42Gears is a leading Unified Endpoint Management solution provider. Customers can choose between Software as a Service (SaaS) and on-premise solutions to secure, monitor and manage their business endpoints. 42Gears supports almost any endpoint, including tablets, phones, rugged devices, desktops, wearables, and more. With over 18,000 customers in 115 countries, 42Gears solutions have a proven track record of success in almost any industry and scale.



Sales



APAC & MEA

Email : sales@42gears.com

Phone : +91 88888 48892



Americas

Email : sales@42gears.com

Phone : +1 408 758 0205



UK & Europe

Email: sales@42gears.com

Phone: +44 07459 918892



[/company/42gears](https://www.linkedin.com/company/42gears)



[/42gears](https://www.facebook.com/42gears)



[@42gears](https://twitter.com/42gears)



[/42gears](https://www.youtube.com/42gears)